



The Pan-American Institute of Geography and History (PAIGH)  
*United States National Section*

# 2017 ANNUAL REPORT

<https://uspaigh.org>

# Table of Contents

<b>Introduction.....</b>	<b>1</b>
<b>PAIGH USNS Annual Meeting.....</b>	<b>2</b>
<b>Cartography Commission .....</b>	<b>3</b>
<b>Geography Commission .....</b>	<b>5</b>
<b>History Commission.....</b>	<b>7</b>
<b>Geophysics Commission .....</b>	<b>9</b>
<b>Directory .....</b>	<b>16</b>
<b>Appendix 1 – USNS Annual Meeting Agenda .....</b>	<b>25</b>
<b>Appendix 2 – USNS Member Publications and Conference Contributions .....</b>	<b>28</b>

## Introduction

---

Deirdre Dalpiaz Bishop, USNS PAIGH President

The United States of America National Section (USNS) of the Pan American Institute of Geography and History (PAIGH) is pleased to submit this report of USNS activities for the period of October 1, 2016 through September 30, 2017. Included are reports from the Geography, Cartography, Geophysics, and History Commission Representatives from within the USNS; summaries of significant activities and meetings; and the USNS roster.

The USNS continues to be honored to have two members serving in leadership positions within PAIGH. Ms. Jean Parcher has remained serving as President of the PAIGH Geography Commission and Dr. Patricia Solis as Vice President. Jean and Patricia bring a wealth of knowledge, experience, and enthusiasm to their roles within the organization.

The leadership of the USNS has remained consistent over the past year, with the exception of one significant change. The USNS welcomes Ms. Helaina Stein as the new Department of State Liaison. Helaina is a Political Officer for Hemispheric Security with the U.S. Mission to the



Organization of American States. The USNS wishes our previous liaison, Ms. Erin Boyer, the best of luck in her new endeavors. Deirdre, U.S. Census Bureau, continues as President of the USNS, Mr. Paul Cooper continues as Vice-President, and Mrs. Ally Johnson, U.S. Geological Survey, maintains her role as Executive Secretary.



Similarly, the leaders of the USNS Commissions continue to serve as active members. Each of the Commission Representatives has faithfully remained in the positions they held the previous year. We gratefully have Dr. Erick Langer of Georgetown University as Principal U.S. Representative to the Commission on History; Mr. Eric van Praag of Esri serving in the role of Principal U.S. Representative to the Commission on Cartography; Dr. David Salisbury of the University of Richmond as the Principal U.S. Representative to the Commission on Geography; and Dr. Jorge Bajo of the University at Buffalo serving in his role as Principal U.S. Representative to the Commission on Geophysics. The only change in the Representatives group is that last year, we reported on Mr. Jorge Bajo, and this year, we are reporting on the activities of Dr. Jorge Bajo. We congratulate Jorge on this significant accomplishment!



Deirdre led the USNS delegation to the 47<sup>th</sup> Meeting of the Directing Council in Asuncion, Paraguay in November 2016. Additional United States delegates accompanied Deirdre, including Jean, Patricia, Ally, Dr. Lynn Usery, and Mr. Dan Cento.

The USNS Web page aids in promoting U.S. activities within PAIGH and facilitates communication both within the national section and with the general public. The USNS is pleased to showcase a new streamlined Web site, available at: <https://uspaigh.org>. USNS member Dr. Diana Sinton, later joined by Ms. Graciela Sandoval, thoughtfully configured this new site to help improve user accessibility to important PAIGH information.

During the reporting period, Mr. Kevin Sullivan, Interim U.S. Representative to the Organization for American States, arranged for payment of the assessed contribution to PAIGH in the amount of US \$162,784 on January 31, 2017. The remaining portion of the payment, also US \$162,784, was disbursed on September 29, 2017, fulfilling the 2017 United States contribution obligation of \$324,568.

This report is neither comprehensive nor exhaustive of the activities conducted by the USNS members, but it is representative of the nature of involvement and contributions that the USNS makes to PAIGH direct activities, goals, and strategic priorities.

### **PAIGH USNS Annual Meeting, Washington DC, May 2-3, 2017**

The 2017 USNS Annual Meeting was held on May 2 and 3, 2017 at the United States Department of the Interior Headquarters in Washington, DC. Welcoming remarks were delivered by Mrs. Deirdre Dalpiaz Bishop, USNS President, and Mr. Paul Cooper, USNS Vice-President. Thanks are given to the U.S. Department of the Interior for their generosity in hosting the meeting and lending their very comfortable facilities. Special thanks are also provided to Mr. Paul Riley, Mrs. Ally Johnson, Ms. Dolly Garcia Jove, and Mr. Gustavo Maldonado for their exceptional efforts related to their logistical planning and organization of the annual meeting.

The USNS was extremely honored to attend the PAIGH address at the Organization of American States (OAS) building. The invitation to support PAIGH through the presence of the USNS Delegation, while Ms. Jean Parcher delivered the remarks of Secretary General Dr. Rodrigo Barriga, will remain an unforgettable experience for the National Section.



The meeting had many invited presentations including, but not limited to the “3D Elevation Program: Status and Plans for National Data Coverage,” “Discovering Lake Coatepeque's secrets using single beam and side scan sonars,” and “Autonomous Indians, Cattle, and Economic Development on the Chaco Frontier (1820-1920).” For a full listing of presentations provided, see Appendix 1, 2017 PAIGH USNS Annual Meeting Agenda. As has been the practice in previous years, the gathering included an historical tour. This



year, members were fortunate to receive “The Interior Museum Murals Tour,” visiting a majority of the forty mural panels painted by artists including Maynard Dixon, Allan Houser, Gifford Beal, and John Steuart Curry. More information is available at the following link:

<https://www.doi.gov/interiormuseum/Tours>

Additionally, the members of the USNS continue to participate in monthly teleconferences to discuss ongoing business of the National Section.

## **Cartography Commission**

---

Eric Van Praag, Representative

The mission of the Cartography Commission is to promote the exchange of technical knowledge in Cartography, develop collaborative partnerships among member countries and between the PAIGH and other multi-national institutions. During 2017, the USNS Cartography Commission advanced activities in the Mapa Integrado de América Latina (MIAN) project, participated in several internal fora, and supported the GeoSUR Program.

### Mapa Integrado de América Central (MIAC)

PAIGH USNS representatives Mr. Roberto Lugo and Mr. Gustavo Maldonado participated in the 5<sup>th</sup> Central American Integrated Mapping (MIAC) Workshop held in El Salvador the week of August 28, 2017. This was a follow-up workshop from the last MIAC meeting held in the fall of 2014. The workshop was led by Mr. Antonio F. Rodríguez Pascual, from the Spanish Center for Geographic Information (CNIG).

Representatives from all of the geographic institutes of the 7 participating Central American countries were in attendance. The purpose of the workshop was to update the regional map with new data recently released by some of the participating agencies, at the requested project scale of 1:200,000. As experienced in past MIAC workshops, participants encountered challenges when harmonizing data from different countries, but all issues were resolved and real progress was made during the meeting.

The group was also able to edit and improve the regional river layer in order to create a Hydrographic Network and was able to make significant progress in this activity. The expectation is that all regional products edited during the workshop will be published on the GeoSUR website in the summer of 2018.

Some technical and administrative issues need to be solved before the regional map is published on the web. For example, some countries have limitations on unrestricted data dissemination (e.g., some data might be viewable but not downloadable) while others have no restrictions.

All the participants were very supportive of the project and collaborated very well with their neighboring country counterparts.

### Mapa Integrado de América del Sur (MIAS)

In 2009 PAIGH funded and supported, with technical assistance provided by the United States Geological Survey, a series of geospatial technical exchange workshops with representatives from all countries in Central America and Mexico. The principal activity and product of the workshops was to apply participatory cartography methods to harmonize and integrate their digital mapping data for the region at the 1:250,000-scale or better. The regional map was completed in 2013.

This project led to the development of an Integrated Map of the Andean Region of Northern South America (MIAN), with financial and technical support from CAF (the Latin American Development Bank), Spain's National Institute of Geography, the United States Department of the Interior and the United States Agency for International Development (USAID). The MIAN digital map was completed in 2016.

The success achieved in the development of these two regional maps lead to the production of the Mapa Integrado de America del Sur (MIAS), the last piece needed to complete a seamless digital map of Latin America. The MIAS regional map should be completed by the second semester of 2017.



The MIAS project was able to produce a digital geographic data base at 1: 250,000 scale that covers basic and fundamental topographic themes: Administrative Boundaries, Hydrography, Villages, Roads, Morphology and others (Points of Interest) using official geographic information of each country. The project also produced a catalog of geographic objects (features) and attributes, it helped to solve most of the geometric and semantic matches in the frontiers, and developed a methodology for coordinating the work remotely between the workshops.



All the data produced as part of the MIAS project is available for viewing in the GeoSUR Regional Map Service operated by the USGS on behalf of the GeoSUR Program: [www.geosur.info](http://www.geosur.info). The service follows the OGC WMS protocol and can be consumed by other client viewers. All data and services produced in this and previous aforementioned projects have associated ISO19119 and ISO19115 metadata to facilitate their discovery and use.

Mr. Roberto Lugo provided technical assistance and support for the MIAS project during this reporting period, and participated in the initial MIAS workshops that took place in Rio de

Janeiro. Roberto worked on corrections of themes across border boundaries and supported the creation of a hydro network from the river data theme. Mr. Michael Starbuck (USGS/EROS) also supported the MIAS project by providing Landsat 8 images for all of Paraguay and the Guianas to the Spanish Center for Geographic Information (CNIG).

#### GeoSUR Program

Mr. Eric van Praag, USNS Representative to the PAIGH Cartography Commission, provided support to the GeoSUR Program during this reporting period. Eric and Mr. Santiago Borrero, Coordinator of the GeoSUR Program, held periodic phone calls and virtual meetings to solve technical issues and to review and discuss several enhancements planned for the regional GeoSUR platform.

Esri provided technical assistance for the migration of the GeoSUR metadata catalog to the latest version of Geoportal Server, and provided detailed instructions to the USGS/EROS necessary to migrate all existing GeoSUR metadata to the new catalog.

#### OGC-PAIGH MOU

Mr. Paul Cooper, a member of this Commission and also Vice President of the PAIGH USNS, was in touch with representatives from the Open Geospatial Consortium (OGC). This organization pushes consistent standards and best practices for the geospatial community. Paul worked with the OGC to develop a Memorandum of Understanding (MOU) between this organization and PAIGH to foster consistent standards and best practices across this community.

### **Geography Commission**

---

Dr. David Salisbury, Representative

This past year, the USNS Geography Commission advanced activities focused around the Research and Education Committees of the three-fold committee structure of PAIGH (Institutional Strengthening currently lacks leadership).

The role of the USNS Geography Commission is to help foster collaboration among geographers of the Americas through its member activities and its participation in PAIGH programs.

The USNS Geography Commission is strengthened by two members who lead PAIGH's Geography Commission as the President, Ms. Jean Parcher, and Vice-President, Dr. Patricia Solís. Their leadership ensures an active representation of the USNS commission at the highest level.

#### Work Plan

The work plan of the Geography Commission emphasizes the aim of championing geographic research at the Pan American level, spurring the educational community towards collaborative production of scientific and geographic knowledge, and backing the goals of the PAIGH 2010-2020 Pan American Agenda in interdisciplinary coordination with the other Commissions.

Implementation of the work plan is to be interactive and strengthen communication with Member States. USNS Geography Commission Members are contributing leadership to the Pan American Working Groups, organized under two of the three committees, including:

- Research Committee - Working Group for an Atlas of Climatic Change in the Americas: This annotated Atlas will supply investigators and students with a view of the changing landscape, goals, and opportunities associated with the climatic change in the Americas.

The Pan-American Technical Assistance group awarded a seed grant for the proposal, "Atlas del Cambio Climático de las Américas", to geographers from Argentina, Colombia, Mexico, Venezuela and the United States of America. This group met in August in Bogotá, Colombia.

- Education Committee - Working Group for Online Courses: This group is promoting geographic online courses with the end goal to create collaboration amongst geography professors in the Americas. Dr. Osvaldo Muñoz Solari led a grant winning team which obtained 2014-2015 funding via a PAIGH research grant. Osvaldo is the Lead, working together with Ms. Graciela Cacace and Ms. Maria Cristina Peneda.
- Committee for Institutional Strengthening: This working group is currently inactive.

### Conferences and Meetings

The **Association of American Geographers** 2017 Annual Meeting in Boston, MA hosted more than 9,400 geographers, GIS specialists, environmental scientists, and other registrants from around the world sharing the very latest in research, policy, and applications in geography,

sustainability, and GIScience. Of those attending, thousands representing approximately 36 percent of all attendees, came from 89 different countries other than the U.S.A., which continues a steady trend toward increased international participation at AAG Meetings.



*The Tobin Bridge and the Boston skyline from Malone Park in Chelsea (Robbie Shade, Wikimedia Commons).*

For comparison, the 2007 meeting in San Francisco registered approximately 24 percent international attendees.

The **Conference of Latin Americanist Geographers** 2017 Annual Meeting was held in New Orleans, Louisiana January 3-5, 2017. The conference included 163 registered participants from 11 countries in 31 sessions with 155 presentations on topics spanning the discipline of geography and in opening and closing receptions and a field trip.

During the conference, Ms. Jean Parcher was awarded the Private Sector and Government Award, given in recognition of her contributions to enhancing and disseminating knowledge of



the geography of Latin America to professionals in government or the public in the private sector. We congratulate Jean on this significant honor!

The **Atlas of Climate Change in the Americas Workshop** took place in Bogotá, Colombia from the 14-17<sup>th</sup> of August, 2017. The four-day workshop included 53 total participants from Argentina, Brazil, Colombia, Mexico, Spain, and the United States. The workshop determined that the first phase of the project should be to analyze the availability of and access to the information and databases necessary to realize an Atlas of the Americas at a continental scale on



climate change. In addition, the workshop participants identified the following case studies to be of particular interest for inclusion in the Atlas: sea level rise, glacier retreat, extreme weather events, impacts on biodiversity, health, urban systems, climate induced migration, traditional societies, agricultural production, animal husbandry, food security.

*Climate Change Atlas of the Americas Workshop Participants on August 16<sup>th</sup>, 2017 at the University of Applied and Environmental Sciences, Bogotá, Colombia.*

## **History Commission**

Dr. Erick D. Langer, Representative

The History Commission has been active this year. In addition to continuing the projects from last year, the Commission is excited to welcome a new member into its fold.

### **Projects**

#### **History of the Americas**

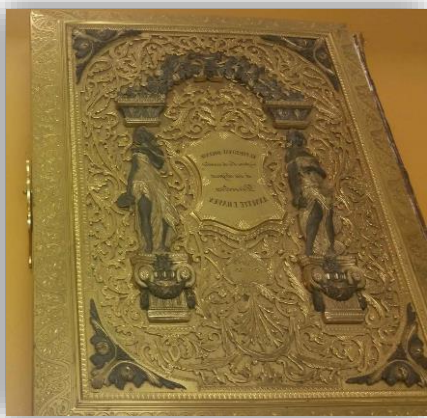
The *History of the Americas* project continues. The idea is to publish an history of the Western Hemisphere in one volume, written by scholars of the hemisphere. The three co-editors are Dr. Patricia Galeana, Mexico, Dr. Andre Figueiredo, Brazil, and Dr. Erick Langer, United States. It was a great privilege to obtain the support of the General Secretary of the Organization of American States, Luis Almagro, for the project. He was kind enough to write a letter, encouraging its publication. On another front with the book, because of the continuing political and financial crisis in Brazil, co-editor Erick was not able to travel to São Paulo, Brazil, to work with Andre on refining the project. However, they have rescheduled for next year to complete the project.

#### **National Section Document Archiving**

The other project in which the History Commission is leading is the preservation of the U.S. National Section PAIGH archives. The Archiving Project is a multi-Commission team project comprised of two History Commission members, Dr. James Siekmeier and Dr. Timothy Schultz; one Geophysics Commission member, Dr. Jorge Bajo; and Executive Secretary, Mrs. Ally

Johnson. They have met virtually several times, presented at some USNS monthly meetings, polled the USNS membership about records each might possess, virtually and personally interviewed the Organization of American States (OAS) Reference Librarian, Ms. Stella Villagran; and presented on the project at the 2017 USNS Annual Meeting in Washington D.C.

In addition to the guidance graciously provided by Ms. Villagran over the phone and personally in the Columbus Memorial Library located in the OAS building, the Archiving Team also obtained a copy of the OAS Records Retention Schedule to assist them in evaluating materials for preservation. The Archiving Team also purchased an external hard drive to use as a back-up virtual record for the electronic storage solution they are developing.



At this point, the team members are working on finding a home for the USNS archive. They have some potential candidates for this, but are negotiating the exact details. While the Annual Reports and Projects are for public view on the USNS website, the goals of the Archiving Project are 1) to also hold these public items and all temporary or permanent records the National Section generates and 2) make the USNS records accessible to anyone in the USNS membership, regardless of their location.

*"The Golden Book" donated to the Library of the Pan American Union as a sign of friendship from the Government of Argentina.*

### **History Commission Support of USNS Annual Meeting**

The U.S. Section of the History Commission had a number of members joining us at the Annual Meeting, held in the Department of the Interior in Washington, DC, including Dr. Timothy Schultz and Dr. Erick Langer. Dr. James Siekmeier was able to join us later at a luncheon. At the meeting, Erick presented preliminary findings of his research on the historical impact of cattle grazing in the Chaco region of South America. Tim presented on the National Section Document Archiving Project.

### **New Commission Member**

The Commission is happy to have Dr. Thomas Fields, Professor of Global Security and Intelligence from Embry-Riddle University, join as a member of the History Commission. He promises to bring expertise on revolutionary movements and U.S.-Latin American relations to the section. He reports that he has been asked to become part of the Society for Historians of American Foreign Relations' new "Latin America and the World" group. In addition, he is contributing the entry for "Latin America and the Cold War" for the *Oxford Research Encyclopedia of Latin American History*.

## **Geophysics Commission**

---

Dr. Jorge V. Bajo Sanchez, Representative

This year the USNS Geophysics Commission continued to grow with the addition of Mr. Chris Wintemute, Survey Statistician, Retail Indicators Branch, Economic Indicators Division, U.S. Census Bureau. We have talked about the different ways in which he can be involved and participate within the Commission.

Dr. Christopher L. Castro continues to be the Principal Coordinator for the Climate Change Committee for the PAIGH Geophysics Commission and as such, has been invited to participate in the 21st General Assembly and the Technical Committee Meetings. Dr. Bettina Martinez-Hackert and Dr. Jorge Bajo were also invited by Dr. Walter Fernandez, President, PAIGH Geophysics Commission, to participate and present in the 21st Technical Committee to be held in Panama City, Panama on October 23rd-24th, 2017. This shows once more the importance of the work done by members of the USNS Geophysics Commission.

### **Projects**

The USNS Geophysics Commission continued to be prolific within their ranks participating in two different projects within PAIGH.

#### **National Section Document Archiving**

Dr. Jorge V. Bajo Sanchez is one of the four members of the National Section Document Archiving project that was awarded funding by the History Commission. This project aims to create the first steps towards standardization and archiving of PAIGH-related documents for the different National Sections. The archiving and standardization of PAIGH documents is essential for the continued success of PAIGH. It will strengthen the organization and make its rich and vast library of documents available and easily transferable between National Sections.

This project proposes to learn the already-existing standards used by the PAIGH main office in Mexico to archive documents. Sample types of documents include partial and final reports, conference minutes, meeting resolutions, etc., but certainly not limited to those. It also proposes to improve and modify if necessary the already-existing mechanisms so that better document management techniques can be implemented with the documents of the various National Sections. The U.S. National Section will also create a procedure on how to standardize and archive its records, not only digitally, but also in hard copy. More details about this project can be read in the History Commission Contribution to this Annual Report.

#### **Bathymetric, Hydrographic, and Topographic Study of the Basin of the Coatepeque Lake, El Salvador Using Single Beam and Side Scan Sonar**

Dr. Bettina Martinez-Hackert continued her work on the Bathymetric, Hydrographic, and Topographic Study of the Basin of the Coatepeque Lake, El Salvador Using Single Beam and Side Scan Sonar project which was approved and supported by the Geophysics and Geography Committees in 2016.



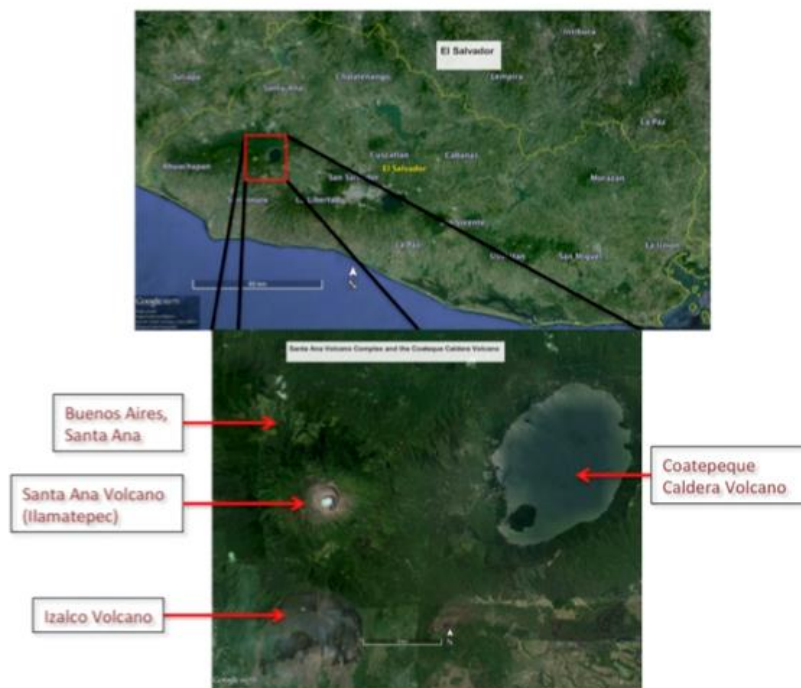


*Research Team Members during fieldwork. Back from left to right: Tami Beduhn (Teledyne-CARIS), Ing. Carlos Figuero (CNR), Dr. Jorge V. Bajo Sanchez (Buffalo State), Mr. Rafael Lopez (CNR), Ing. Luis Hernandez (CNR), Ing. Eduardo Gutierrez (MARN), Ing. Francisco Montalvo (MARN), Agent Wilber (PNC), Agent Carlos Canales (PNC), Ing. Rafael de Leon (CNR). Front from left to right: Lauren Ambury (Buffalo State), Dr. Bettina Martinez-Hackert (Buffalo State) and Mr. Victor Castillo (CNR). June 2016.*

Coatepeque community, was particularly impressed with Bettina's presentation at the XIII Congreso Geológico de América Central – San Salvador June 5-9, 2017 in the Universidad Centroamericana José Simeón Cañas, San Salvador, El Salvador. Ing. Guillen then provided the team with lodging and boats to continue the work that began in 2016. Thanks to this additional collaboration, Bettina was able to go with an undergraduate student from SUNY Buffalo State once again to Lake Coatepeque and collect more data.

*The top photo gives a general view of the location of the Coatepeque Lake within the country of El Salvador. The lower photo shows the location of the lake using the Santa Ana Volcanic Complex as a reference point.*

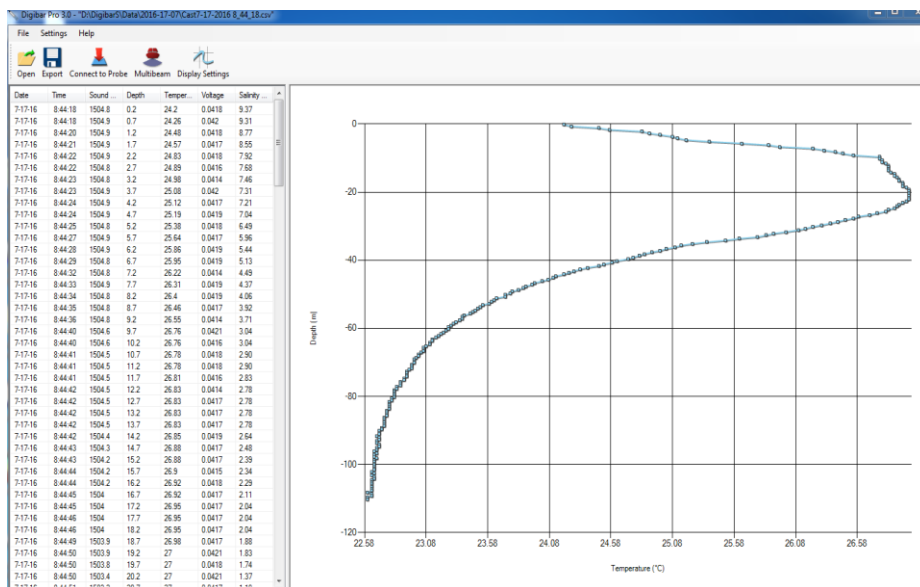
The Coatepeque Caldera Lake is situated on the western part of the country of El Salvador, and it is considered an active volcano with the last eruption estimated about 10,000 b.p. years ago, and the last rhyolitic explosive eruption estimated at 50,000 years b.p. and it presents a lot of doming activity. Some of these domes have been seen and discovered during fieldwork for the first time.



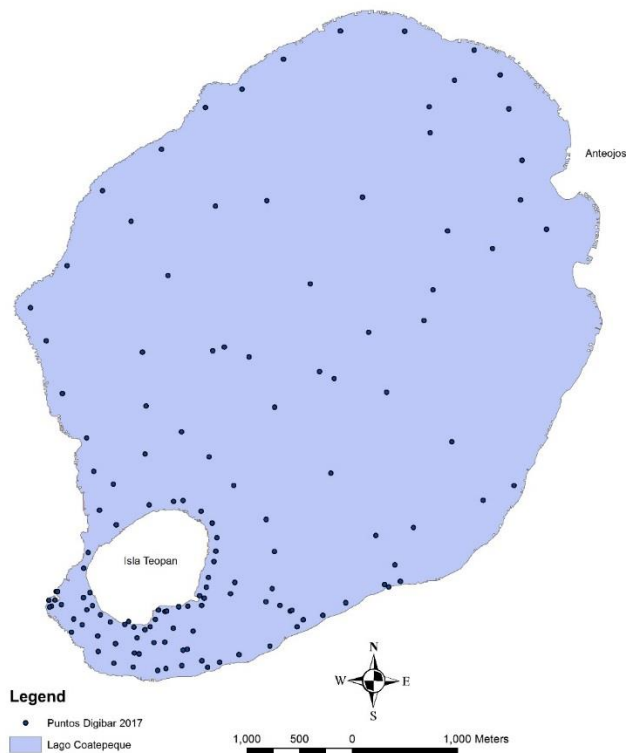
The team continued to use the Digibar lent by Teledyne-CARIS. Based on the readings collected during this time, the team was able to create a series of temperature maps of the lake. These maps were generated by Dr. Jorge V. Bajo Sanchez using ArcGIS software. There is an interpolation of the data collected by the digibar throughout the lake. This instrument collects temperature, salinity, depth and sound velocity as some of its outputs and it was the first data set the one used to create those maps.



Below one can see a sample of the data collected by the digibar, as well as a map with the locations of all the data points collected in 2017, a depth map based on the data collected in 2016 and a series of temperature maps at 5 meters' depth intervals of the lake based on the 2017 data.

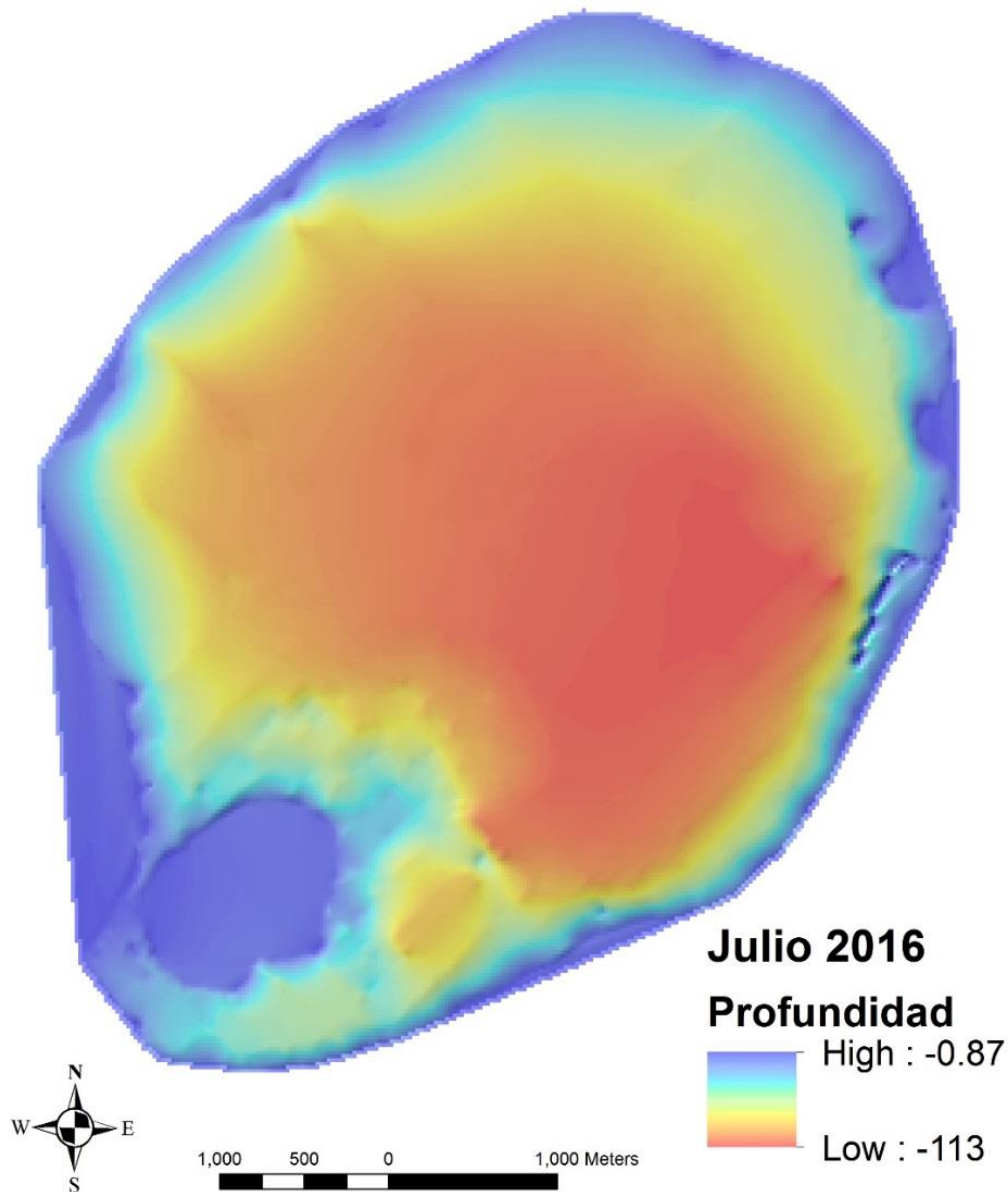


*Screen capture of one of the data points obtained using the Digibar. This particular cast dropped to a depth of 110.2 m. This reading is consistent with others obtained in the lake and 3 distinct water temperature columns are observed.*

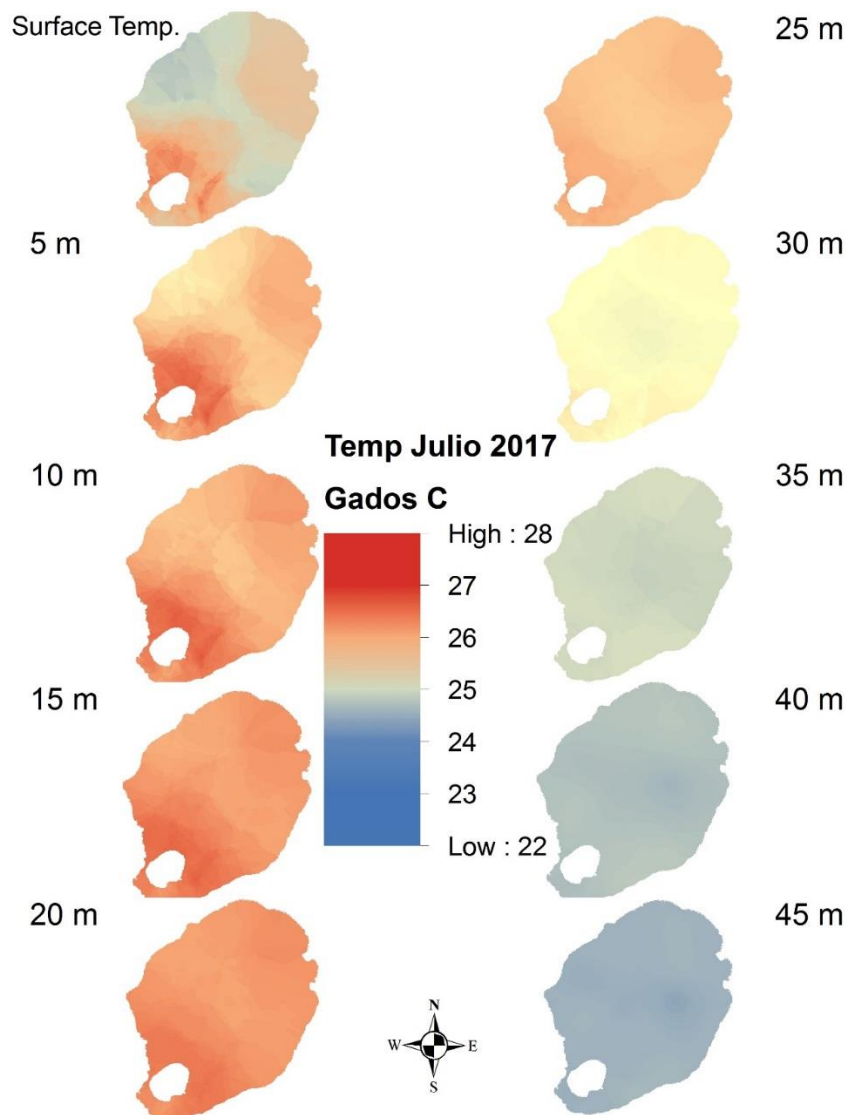


*Map representing the over 100 points collected in 2017 using the digibar.*

Mapa de profundidad basado  
en datos batimetricos Julio 2016



*Map showing the lake's depth in meters. It also shows different geological features never before seen like craters and domes like features.*



*Temperature maps at 5 meters' depth intervals created using the data collected in June 2017. Once more the lake shows a higher temperature at deeper waters than in the surface.*

### **Research**

Dr. Chris Castro also continued to be active in his Climate Change research. Though support of a NEXUS-Fulbright fellowship, Chris has been helping to develop the use of climate change projection data generated by regional atmospheric modeling.

Specifically, in collaboration with colleagues at the National Autonomous University of Mexico, Centro de Ciencias de la Atmosfera, his research group is generating data to support the Coordinated Regional Ensemble Downscaling Experiment (CORDEX). The CORDEX project is generating climate change projection information from regional atmospheric models across all continental landmasses, at grid resolutions of 50, 25, and 12 km, for the purpose of providing more physically resolved climate information to inform impacts assessment and decision making. The simulations dynamically downscale a retrospective atmospheric reanalysis (ERA-

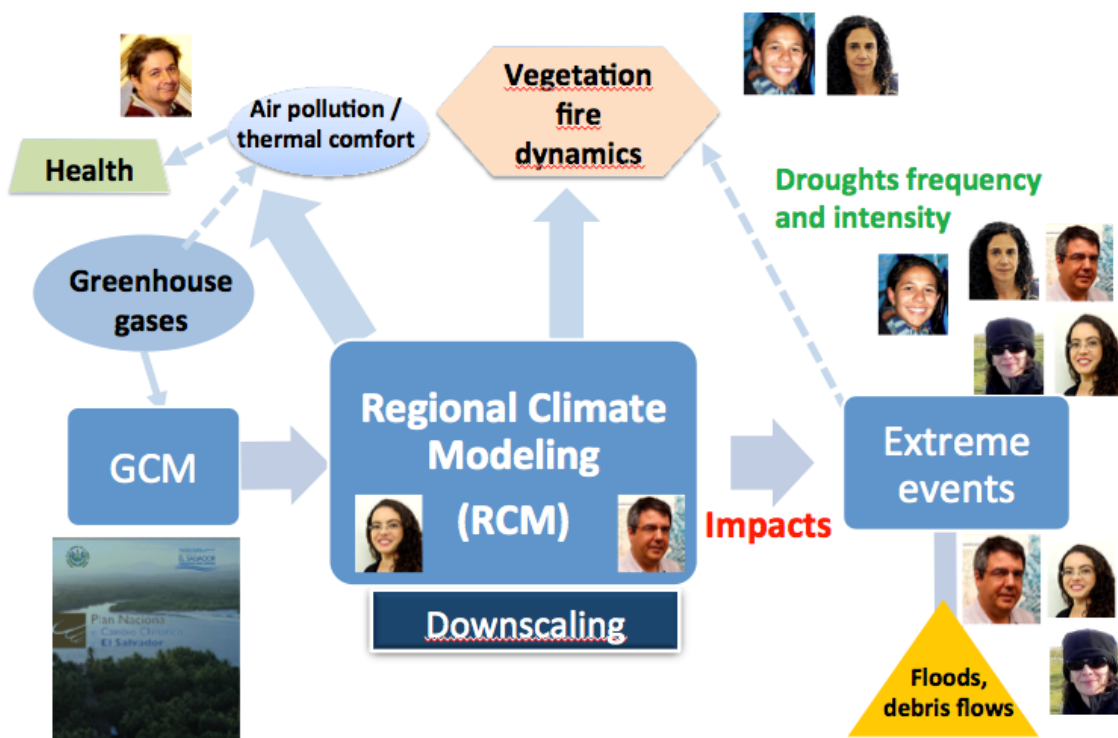
Interim) and IPCC climate change projection models taken from the Coupled Model Intercomparison Project, Version 5 (CMIP 5). Latin America is covered within two CORDEX model domains, in Central America and South America.

Chris' group used the Weather Research and Forecasting (WRF) model to produce a long-term historical CORDEX Central America simulation for the period 1979-2015. These 6 hourly modeled climate data have been made available on the Cyverse cloud storage system for access by multiple users across Latin America, including in Colombia, Mexico, and El Salvador, who are currently analyzing the data for their own purposes. Current plans are to dynamically downscale "well performing" CMIP5 models for Central America with the WRF model. Chris also recently traveled to Brazil to motivate Central and South American CORDEX efforts to the University of Sao Paulo and the Instituto Nacional de Pesquisas Espaciais, specifically with the BRAMS model, which is used for purposes of operational numerical weather prediction.

As compared to other regions of the world, CORDEX efforts in Latin America are still relatively nascent and are lacking centralized sources of support. The broader vision would be to help foment an institutional network within Latin America to 1) help generate CORDEX data, as part of a larger coordinated international strategy with sustained support, 2) disseminate the data from centralized repositories, 3) educate potential users on the utility of the dataset, and 4) demonstrate the application of CORDEX data for impacts assessment and decision making, ideally within national environmental agencies.

*Dr. Castro's team and their roles*

## **Overall objective: Creation of regionalized information in Central America usable for decisions and policy making**







## Integrating Local Stakeholder Needs with Climate Assessment



*Images of the El Salvador meeting that Dr. Castro and his team conducted.*

**PAN AMERICAN INSTITUTE OF GEOGRAPHY AND HISTORY**

<b>President,</b> Geography Commission	Jean W. Parcher Emeritus, USGS 2252 Cedar Cove Ct. Reston, VA 20191 E-mail: <a href="mailto:jwparcher.spa@gmail.com">jwparcher.spa@gmail.com</a>	Cell: (512) 663-9987
---	--	----------------------

<b>Vice President,</b>	Dr. Patricia Solís Geography Commission Co-Director, Center for Geospatial Technology Research Associate Professor of Geography, Department of Geosciences Adjunct Associate Professor, Climate Science Center Texas Tech University MS 1053 Lubbock, TX 79409-1053 E-mail: <a href="mailto:patricia.solis@ttu.edu">patricia.solis@ttu.edu</a>	Tel: (469) 200-9003
------------------------	--	---------------------

**UNITED STATES NATIONAL SECTION  
PAN AMERICAN INSTITUTE OF GEOGRAPHY AND HISTORY**

**NATIONAL SECTION OFFICERS**

<b>President</b>	Deirdre D. Bishop Chief, Geography Division Decennial Directorate U.S. Census Bureau 4600 Silver Hill Road, Room 4H174 Suitland, MD 20746 E-mail: <a href="mailto:deirdre.dalpiaz.bishop@census.gov">deirdre.dalpiaz.bishop@census.gov</a>	Tel: (301) 763-1696
------------------	--	---------------------

<b>Vice President</b>	Paul R. Cooper 405 Old Town Ct. Alexandria, VA 22314 E-mail: <a href="mailto:pcooper10@gmail.com">pcooper10@gmail.com</a>	Tel: (703) 342-7122
-----------------------	--	---------------------

<b>Executive Secretary</b>	Ally Johnson Program Analyst, Budget & Planning National Geospatial Technical Operations Center U.S. Geological Survey 1400 Independence Road Rolla, MO 65401 E-mail: <a href="mailto:amjohnson@usgs.gov">amjohnson@usgs.gov</a>	Tel: (573) 308-3800
----------------------------	--	---------------------

<b>Department of State Liaison</b>	Helaina Stein U.S. Mission to the OAS	Tel: (202) 659-0993
------------------------------------	--	---------------------

Political Officer for Hemispheric Security  
2201 C Street, NW Room  
Washington, D. C. 20520  
E-mail: [steinHM@state.gov](mailto:steinHM@state.gov)

**Representative  
Cartography Commission**

Eric Van Praag  
Esri Professional Services  
Project Manager  
380 New York Street  
Redlands, CA 92373-  
E-mail: [EvanPraag@esri.com](mailto:EvanPraag@esri.com)

Tel: (909) 793-2853 X  
1878  
Cell: (909) 328-9235  
8100

**Representative  
Geography Commission**

Dr. David Salisbury  
Associate Professor  
Department of Geography and the Environment  
University of Richmond  
27 Westhampton Way  
Richmond, VA 23173  
E-mail: [dsalisbu@richmond.edu](mailto:dsalisbu@richmond.edu)

Tel: (804) 289-8661  
Fax: (804) 484-1577

**Representative  
Geophysics Commission**

Jorge V. Bajo Sanchez  
PhD  
Lecturer  
Department of Earth Science and Science Education  
SUNY College at Buffalo  
1300 Elmwood Ave.  
Buffalo, NY 14222  
E-mail: [jvbajo@buffalo.edu](mailto:jvbajo@buffalo.edu)

Tel: (716) 907-1400

**Representative  
History Commission**

Dr. Erick Detlef Langer  
Department of History  
Georgetown University  
37th and O Streets, N.W.  
Washington, DC 22207-3401  
E-mail: [langere@georgetown.edu](mailto:langere@georgetown.edu)

Tel: (202) 687-7386  
Fax: (202) 687-0142

**Honorary Member**

Bruce W. Presgrave  
U. S. Geological Survey  
National Earthquake Information Center  
P. O. Box 25046, MS 966  
Denver, CO 80225  
E-mail: [presgrave@usgs.gov](mailto:presgrave@usgs.gov)

Tel: (303) 273-8461  
Fax: (303) 273-8450

**Honorary Member**

Mark L. DeMulder  
Emeritus, National Geospatial Program  
U.S. Geological Survey  
12201 Sunrise Valley Drive Mail Stop 511  
Reston, VA 20192-0002  
E-mail: [mdemulder@usgs.gov](mailto:mdemulder@usgs.gov)

Tel: (703) 648-5569  
Fax: (703) 648-5939

## Commission on Cartography

### Representation

#### Representative

Eric Van Praag  
Esri Professional Services  
Project Manager  
380 New York Street  
Redlands, CA 92373-8100  
E-mail: [EvanPraag@esri.com](mailto:EvanPraag@esri.com)

Tel: (909) 793-2853 X  
1878  
Cell: (909) 328-9235

#### Alternate Representative

VACANT

#### Member

Dr. Lynn E. Usery  
Research Physical Scientist  
National Geospatial Program  
U.S. Geological Survey  
1400 Independence Road  
Rolla, MO 65401  
E-mail: [usery@usgs.gov](mailto:usery@usgs.gov)

Tel: 573-308-3652

### Policy Committees

#### Geospatial Data Infrastructures Committee

##### Principal Member

Eric Van Praag  
Esri Professional Services  
Project Manager  
380 New York Street  
Redlands, CA 92373-8100  
E-mail: [EvanPraag@esri.com](mailto:EvanPraag@esri.com)

Tel: (909) 793-2853 X  
1878  
Cell: (909) 328-9235

#### Committee on Institutional Strengthening and Technical Cooperation

##### Principal Member

Paul R. Cooper  
405 Old Town Ct.  
Alexandria, VA 22314  
E-mail: [pcooper10@gmail.com](mailto:pcooper10@gmail.com)

Tel: (703) 342-7122

#### Communications Committee

\*No U.S. Representation on this committee

### Technical Committees and Working Groups

#### Reference System for the Americas (SIRGAS) (Working Group)

##### Principal Member

VACANT



### **Geographic Names (Working Group)**

<b>Principal Member</b>	Roger Payne U.S. Geological Survey 137 Sir Thomas Lunsford Dr. Williamsburg, VA 23185 Email: <a href="mailto:rpayne@usgs.gov">rpayne@usgs.gov</a>	Tel: (703) 309-9765
-------------------------	---	---------------------

<b>Alternate Member</b>	George Troop National Geospatial-Intelligence Agency 7500 GEOINT Dr. Springfield, VA 22150 E-mail: <a href="mailto:george.g.troop@nga.mil">george.g.troop@nga.mil</a>	Tel: (571) 557-6546
-------------------------	---	---------------------

### **Tactile Cartography (Working Group)**

**\*No U.S. Representation on this committee**

### **Hydrography (Technical Committee)**

<b>Principal Member</b>	<b>VACANT</b>
-------------------------	---------------

<b>Alternate Member</b>	Paul R. Cooper 405 Old Town Ct. Alexandria, VA 22314 E-mail: <a href="mailto:pcooper10@gmail.com">pcooper10@gmail.com</a>	Tel: (703) 342-7122
-------------------------	--	---------------------

### **Aeronautic Charts (Technical Committee)**

<b>Principal Member</b>	Robert L. Goodson National Geospatial-Intelligence Agency 7500 GEOint Drive Springfield, VA 22150-7500 E-mail: <a href="mailto:robert.l.goodson@nga.mil">robert.l.goodson@nga.mil</a>	Tel: (571) 558-1714 Fax: (571) 558-3213
-------------------------	---	--

<b>Alternate Member</b>	<b>VACANT</b>
-------------------------	---------------

### **Fundamental Data (Working Group)**

<b>Principal Member</b>	<b>VACANT</b>
-------------------------	---------------

<b>Member</b>	Roberto Lugo Emeritus USGS 3020 State University Dr. East, Rm 4003 Sacramento CA 95819 E-mail: <a href="mailto:rlugo@usgs.gov">rlugo@usgs.gov</a> <a href="mailto:rvlugo@yahoo.com">rvlugo@yahoo.com</a>	Tel: (916) 616-1362
---------------	---	---------------------

### **Thematic Cartography and Applications (Working Group)**

**VACANT**

### **Editor of the Revista Cartográfica (Technical Committee)**

<b>Member</b>	Dr. Osvaldo A. Muñoz-Solari Professor, Department of Geography Texas State University - San Marcos 601 University Drive San Marcos, Texas 78666 E-mail: <a href="mailto:o.muniz@txstate.edu">o.muniz@txstate.edu</a>	Tel: (512) 245-0375
---------------	---	---------------------

## **Commission on Geography**

### **Representation**

<b>Representative</b>	Dr. David Salisbury Associate Professor Department of Geography and the Environment University of Richmond 27 Westhampton Way Richmond, VA 23173 E-mail: <a href="mailto:dsalisbu@richmond.edu">dsalisbu@richmond.edu</a>	Tel: (804) 289-8661 Fax: (804) 484-1577
-----------------------	---	--

<b>Alternate</b>	Dr. Betty Smith Department of Geology and Geography 600 Lincoln Avenue Eastern Illinois University Charleston, IL 61920-3099 E-mail: <a href="mailto:besmith@eiu.edu">besmith@eiu.edu</a>	Tel: (217) 581-6340
------------------	--	---------------------

### **Committee Members: US Geography Commission**

#### **Research Committee**

<b>Principal Member</b>	Dr. David Salisbury Associate Professor Department of Geography and the Environment University of Richmond 28 Westhampton Way Richmond, VA 23173 E-mail: <a href="mailto:dsalisbu@richmond.edu">dsalisbu@richmond.edu</a>	Tel: (804) 289-8661 Fax: (804) 287-6833
-------------------------	---	--

<b>Member</b>	<b>Timothy Trainor</b> Chief, Geospatial Scientist U.S. Census Bureau 4600 Silver Hill Road - Mail Stop 7400 Suitland, MD 20746 E-mail: <a href="mailto:timothy.f.trainor@census.gov">timothy.f.trainor@census.gov</a>	Tel: (301) 763-2131 Fax: (301) 763-4710
---------------	---	--

<b>Member</b>	Dr. Andrew Sluyter Executive Director, Conference of Latin American Geographers Department of Geography and Anthropology Louisiana State University Baton Rouge, LA 70803 E-mail: <a href="mailto:asluyter@lsu.edu">asluyter@lsu.edu</a>	Tel: (225) 578-4261 Fax: (225) 578-4420
---------------	---	--

<b>Member</b>	Gustavo A. Maldonado Dávila Geographic Specialist, Spatial Data Update Branch U.S. Census Bureau 4600 Silver Hill Road Suitland, MD 20746 E-mail: <a href="mailto:gustavo.maldonado.davila@census.gov">gustavo.maldonado.davila@census.gov</a>	Tel: (301) 763-2543
<b>Member</b>	Eric Anderson NASA-SERVIR Research Associate Earth System Science Center University of Alabama in Huntsville 320 Sparkman Dr. Huntsville, AL 35805 E-mail: <a href="mailto:eric.anderson@nsstc.uah.edu">eric.anderson@nsstc.uah.edu</a> E-mail 2: <a href="mailto:eric.anderson@nasa.gov">eric.anderson@nasa.gov</a>	Tel: (256) 961-7007
<b>Member</b>	Dolly V. García Jové Geographic Specialist, Spatial Data Update Branch U.S. Census Bureau 4600 Silver Hill Road Suitland, MD 20746 E-mail: <a href="mailto:dolly.v.garcia@census.gov">dolly.v.garcia@census.gov</a>	Tel: (301) 763-2335
<b>Member</b>	Graciela Sandoval PhD Student, Department of Geography Texas State University 601 University Dr. San Marcos, TX 78666 E-mail: <a href="mailto:gs1132@txstate.edu">gs1132@txstate.edu</a>	Tel: (202) 857-3415
 <b><u>Education Committee</u></b>		
<b>Principal Member</b>	Dr. Betty Smith Department of Geology and Geography 600 Lincoln Avenue Eastern Illinois University Charleston, IL 61920-3099 E-mail: <a href="mailto:besmith@eiu.edu">besmith@eiu.edu</a>	Tel: (217) 581-6340
<b>Member</b>	Dr. Osvaldo A. Muñoz-Solari Professor, Department of Geography Texas State University - San Marcos 601 University Drive San Marcos, Texas 78666 E-mail: <a href="mailto:o.muniz@txstate.edu">o.muniz@txstate.edu</a>	Tel: (512) 245-0375
<b>Member</b>	Dr. Diana Stuart Sinton Executive Director The University Consortium for Geographic Information Sciences P.O. Box 612 Ithaca, NY 14851 E-mail: <a href="mailto:dianasinton@ucgis.org">dianasinton@ucgis.org</a>	Tel: (607) 252-6851

### **Committee on Institutional Strengthening**

**Principal Member**                      **VACANT**

**Member**                                      **VACANT**

### **Commission on History**

#### **Representation**

**Representative**                      Dr. Erick Detlef Langer                      Tel: (202) 687-7386  
Department of History                      Fax: (202) 687-0142  
Georgetown University  
37<sup>th</sup> and O Streets, N.W.  
Washington, DC 22207-3401  
E-mail: [langere@georgetown.edu](mailto:langere@georgetown.edu)

**Member**                                      Evan R. Ward, Ph. D                      Tel: (801) 422-8065  
Associate Professor  
Department of History  
2155 JFSB  
Brigham Young University  
Provo, UT 84602  
E-mail: [evan\\_ward@byu.edu](mailto:evan_ward@byu.edu)

**Member**                                      James Siekmeier                      Tel: (304) 293-2421  
Assistant Professor  
Department of History  
West Virginia University  
220E Woodburn Hall  
Morgantown, WV 26506  
E-mail: [james.siekmeier@mail.wvu.edu](mailto:james.siekmeier@mail.wvu.edu)

**Member**                                      Dr. Juana Moriel-Payne                      Tel: (915) 539-0799  
University of Texas at El Paso  
814 N Dos Robles Place  
Alhambra, CA 91801  
E-mail: [juanamoriel@yahoo.com](mailto:juanamoriel@yahoo.com)

**Member:**                                      Timothy Schultz, J.D.                      Tel: (305) 437-2007  
Staff Historian  
United States Southern Command  
Office of the Command Historian  
9301 NW 33rd St., Room 2519  
Doral, FL. 33172  
E-mail: [timoth.a.schultz22.ctr@mail.mil](mailto:timoth.a.schultz22.ctr@mail.mil)

**Member:**                                      Dr. Thomas C. Field Jr.                      Tel: (928) 777-6978  
Chair and Associate Professor  
Department of Global Security and Intelligence Studies  
College of Security and Intelligence  
Embry-Riddle Aeronautical University  
3700 Willow Creek Road  
Prescott, AZ 86301



## Commission on Geophysics

### Representation

#### Representative

Jorge V. Bajo Sanchez  
PhD  
Lecturer  
Department of Earth Science and Science Education  
SUNY College at Buffalo  
1300 Elmwood Ave.  
Buffalo, NY 14222  
E-mail: [jvbajo@buffalo.edu](mailto:jvbajo@buffalo.edu)

Tel: (716) 907-1400

#### Alternate Representative

Dr. Bettina Martinez-Hackert  
Assistant Professor  
Department of Earth Science and Science Education  
SUNY College at Buffalo (Buffalo State College)  
1300 Elmwood Ave.  
Buffalo, NY 14222  
E-mail: [martinb@buffalostate.edu](mailto:martinb@buffalostate.edu)

Tel: (716) 878-5005

Cell: (716) 907-1401

### Natural Disasters Committee

#### Member

Jorge V. Bajo Sanchez  
PhD  
Lecturer  
Department of Earth Science and Science Education  
SUNY College at Buffalo  
1300 Elmwood Ave.  
Buffalo, NY 14222  
E-mail: [jvbajo@buffalo.edu](mailto:jvbajo@buffalo.edu)

Tel: (716) 907-1400

### Applied Geophysics Committee

#### Member

Dr. Bettina Martinez-Hackert  
Assistant Professor  
Department of Earth Science and Science Education  
SUNY College at Buffalo (Buffalo State College)  
1300 Elmwood Ave.  
Buffalo, NY 14222  
E-mail: [martinb@buffalostate.edu](mailto:martinb@buffalostate.edu)

Tel: (716) 878-5005

Cell: (716) 907-1401

#### Member

Dr. Gary Solar  
Associate Professor  
Department of Earth Science and Science Education  
SUNY Buffalo State  
1300 Elmwood Ave.  
Buffalo, NY 14222  
E-mail: [solargs@buffalostate.edu](mailto:solargs@buffalostate.edu)

Tel: (716) 878-6731

### **Climate Change Committee**

#### **Principal Member**

Dr. Christopher L. Castro  
Department of Atmospheric Sciences  
University of Arizona  
Physics and Atmospheric Sciences Building,  
Room 520  
1118 E. Fourth St.  
Tucson, AZ 85721  
E-mail: [castro@atmo.arizona.edu](mailto:castro@atmo.arizona.edu)

Tel: (520) 626-5617  
Fax: (520) 621-6833

### **Special Studies Committee**

#### **Member**

Jorge V. Bajo Sanchez  
PhD  
Lecturer  
Department of Earth Science and Science Education  
SUNY College at Buffalo  
1300 Elmwood Ave.  
Buffalo, NY 14222  
E-mail: [jvbajo@buffalo.edu](mailto:jvbajo@buffalo.edu)

Tel: (716) 907-1400

#### **Member**

Dr. Bettina Martinez-Hackert  
Assistant Professor  
Department of Earth Science and Science Education  
SUNY College at Buffalo (Buffalo State College)  
1300 Elmwood Ave.  
Buffalo, NY 14222  
E-mail: [martinb@buffalostate.edu](mailto:martinb@buffalostate.edu)

Tel: (716) 878-5005  
Cell: (716) 907-1401

#### **Member**

Dr. Gary Solar  
Associate Professor  
Department of Earth Science and Science Education  
SUNY Buffalo State  
1300 Elmwood Ave.  
Buffalo, NY 14222  
E-mail: [solargs@buffalostate.edu](mailto:solargs@buffalostate.edu)

Tel: (716) 878-6731

#### **Member**

Dr. Christopher L. Castro  
Department of Atmospheric Sciences  
University of Arizona  
Physics and Atmospheric Sciences Building,  
Room 520  
1118 E. Fourth St.  
Tucson, AZ 85721  
E-mail: [castro@atmo.arizona.edu](mailto:castro@atmo.arizona.edu)

Tel: (520) 626-5617  
Fax: (520) 621-6833



**PAN AMERICAN INSTITUTE OF  
GEOGRAPHY AND HISTORY**

Specialized Organization of the  
Organization of American States

-----  
UNITED STATES NATIONAL SECTION

## **Agenda**

### **2017 Meeting of the U.S. National Section Pan American Institute of Geography and History**

U.S. Department of the Interior

Washington, DC

May 2 & 3, 2017

1-866-692-3158 Participant Code 1208700

WebEx: <https://usgs.webex.com/join/amjohnson>

#### **Tuesday, May 2, 2017**

#### **DOI Building, Room 2529 – Meet at E Street Entrance**

- |                     |  |
|---------------------|--|
| <b>8:45 – 9:00</b>  | <b>Optional light refreshments (Juice, coffee, pastries, fruit)</b>  |
| <b>9:00 – 9:10</b>  | <b>Welcoming Remarks</b>   |
|                     | <ul style="list-style-type: none"> <li>• Deirdre Bishop, USNS President</li> </ul>   |
| <b>9:10 – 9:20</b>  | <b>Opening Remarks</b>   |
|                     | <ul style="list-style-type: none"> <li>• Paul Cooper, USNS Vice-President</li> </ul>   |
| <b>9:20 – 9:45</b>  | <b>USNS Discussion Items</b>   |
|                     | <ul style="list-style-type: none"> <li>• USNS Roster Update – Ally Johnson</li> <li>• USNS Annual Report Discussion – Deirdre Bishop/Paul Cooper</li> <li>• USNS Membership General Recruitment Tools – Paul Cooper</li> </ul> |
| <b>9:45 – 10:00</b> | <b>Walk to OAS Building</b>  |

- 10:00 – 10:45      OAS Presentation – PAIGH Annual Report**
- 10:45 – 11:00      Walk back to DOI Building**
- 11:00 – 11:30      Invited Presentations by USNS Guests**
- 3D Elevation Program: Status and Plans for National Data Coverage – Vicki Lukas, USGS National Geospatial Program
- 11:30 – 12:00      Invited Presentations by USNS Members**
- UN-GGIM – Tim Trainor
- 12:00 – 12:10      Request from the Secretary General of PAIGH**
- General Assembly Meeting Topics – Deirdre Bishop
- 12:10 – 1:10      U.S. Delegation Lunch**
- 1:10 – 3:00      Invited Presentations by USNS Members**
- AAG Conference/Outreach Efforts – Dolly Garcia
  - IHO Conference – Paul Cooper
  - Discovering Lake Coatepeque's secrets using single beam and side scan sonars - Jorge Bajo
  - In-Office Address Canvassing – Dolly Garcia
- 3:00 – 3:20      Wrap up and leave room clean – head to tour location.**
- 3:30 – 4:30      DOI Murals Tour**  
<https://www.doi.gov/interiormuseum/Tours>
- 5:30      Delegation Dinner**

### **Wednesday, May 3**

#### **DOI Building, Room John Muir – Meet at E Street Entrance**

- 9:00 – 9:20      Group Photo**
- 9:20 – 9:40      Status of Approved 2016 Project**
- Archiving Project – Timothy Schultz
- 9:40 – 10:00      2018 Project Proposals**
- Census data with mapping integration Project Proposals – Gustavo Maldonado

	<ul style="list-style-type: none"> <li>• Use of multi-beam sonar scan to obtain bathymetric, hydrographic, and topographic data of Lake Coatepeque, El Salvador – Jorge Bajo</li> </ul>
<b>10:00 – 10:20</b>	<b>U.S. Permanent Mission to the Organization of American States - State Department</b> <ul style="list-style-type: none"> <li>• Erin Boyer, U.S. Mission to the OAS, Department of State Liaison</li> </ul>
<b>10:20 – 10:35</b>	<b>Break</b>
<b>10:35 – 11:00</b>	<b>USNS Website Follow-up</b> <ul style="list-style-type: none"> <li>• Diana Sinton (via WebEx)</li> </ul>
<b>11:00 – 11:30</b>	<b>Institute Updates</b> <ul style="list-style-type: none"> <li>• General Assembly/2018 Technical Committee Meetings – Jean Parcher</li> </ul>
<b>11:30 – 12:00</b>	<b>Invited Presentations by USNS Members</b> <ul style="list-style-type: none"> <li>• Autonomous Indians, Cattle, and Economic Development on the Chaco Frontier (1820-1920) – Erick Langer</li> </ul>
<b>12:00 – 1:00</b>	<b>Lunch</b>
<b>1:00 – 2:00</b>	<b>Reports by Commission Representatives</b> <ul style="list-style-type: none"> <li>• Commission on Geography – David Salisbury (via WebEx)</li> <li>• Commission on Geophysics – Jorge Bajo Sanchez</li> <li>• Commission on Cartography – Eric Van Praag (Via WebEx)</li> <li>• Commission on History – Erick Langer</li> </ul>
<b>2:00 – 3:00</b>	<b>Invited Presentations by USNS Guests</b> <ul style="list-style-type: none"> <li>• National Geographic Education Grants - Elaine Larson</li> <li>• PAIGH USNS Foundation - Rubi Soto</li> <li>• PAIGH-AAG Memorandum of Understanding – Douglas Richardson</li> </ul>
<b>3:00 – 3:15</b>	<b>Break</b>
<b>3:15 – 3:45</b>	<b>Meeting Debrief – Action Item Recap</b> <ul style="list-style-type: none"> <li>• Deirdre Bishop/Paul Cooper/Ally Johnson</li> </ul>
<b>3:45</b>	<b>Meeting Adjourns</b>



**USNS Member Conference Participations,  
Significant Accomplishments and Published Works  
Grouped By Commission**

**Geography Commission**

**Research Committee (Principal David Salisbury)**

Dr. Andrew Sluyter

- *Hispanic and Latino New Orleans: Immigration and Identity since the Eighteenth Century* (LSU Press, 2015).
  - Winner of the 2015 [J. B. Jackson Book Prize of the American Association of Geographers](#).
- Executive Director of Conference of Latin Americanist Geographers
- A. Sluyter and Chris Duvall. 2016. African Fire Cultures, Cattle Ranching, and Colonial Landscape Transformations in the Neo-Tropics. *Geographical Review* 106: 294-311.
- CLAG book series: The new Book Series Editorial Board oversees the publication of books by the Conference of Latin Americanist Geographers:
  - Our first initiative in this new venture is a collaboration with Springer Publishers to publish "[Springer Briefs in Latin American Studies](#)." The series will publish compact volumes (50 to 125 pages) on geographical, environmental, cultural, economic, political, and urban research about Latin America. Regional experts will referee all submissions, authors retain copyright, books are published within three months of acceptance, and each will feature the CLAG logo. For more information, [see the series flyer](#). To submit a proposal or manuscript, please contact Dr. Sluyter at [asluyter@lsu.edu](mailto:asluyter@lsu.edu).

Mr. Tim Trainor

- UN Committee of Experts on Global Geospatial Information Management (UN-GGIM) met in NY where approximately 93 countries participated, including many from North, Central and South America (including many Caribbean countries). A special side event took place on August 3 for the UN-GGIM Americas where one theme was SDI strengthening for Latin America. On Sunday, July 31, a Geospatial Data Infrastructure workshop convened for the Caribbean Member States. SDI for the Caribbean nations has been a continuing theme over the last year.
- Earlier workshop was held April 18-19, 2016. It included a breakdown of achievements gained through a Cartography, Metadata and Disaster Response training held at the Fisheries Division Meeting Room of Antigua and Barbuda.
- Training workshop on "Geographic Information Metadata" from March 14-16, 2016 in city of Havana, Cuba, as part of the conference framework of the XVI Convention of Informatics and IX Congress of Geomatics.
- Project for Strengthening the Spatial Data Infrastructure in the States and Territories of the Association of Caribbean States was held the third training course in Cartography in Mexico City, November 8-9, 2015. The course was taught by Dr. Bheshem Ramlal and

Ms. Valrie Grant, with the participation of technical experts from the 14 participating countries.

- More details on these activities can be found at the UN-GGIM Americas website:
  - <http://www.un-ggim-americas.org/>

Dr. David Salisbury

- John D. and Catherine T. MacArthur Grant: Transboundary Sustainability Workshop for Ashaninka/Asheninka.
- Workshop: First Binational Congress of the Ashaninka People. 137 Ashaninka representatives from 54 communities and 24 federations from Peru and Brazil met September 21-22, 2015.
  - Participated in multiple events with Ashaninka during/around United Nations Climate Change 21<sup>st</sup> Conference of the Parties Meeting, Le Bourget, Paris, France.
  - Poster: Piyako, F., Piyako, B., Piyako, W., Samaniego Pascual, M. N., Koshipirinke, J., Salisbury, D. S., Comandulli, C. S. 2015. Ashaninka People of the Amazon Unite to Face Climate Change and Extractive Development. 12/11/2015. Poster presentation at the Indigenous Pavilion during the United Nations Climate Change 21<sup>st</sup> Conference of the Parties Meeting, Espaces Générations Climat, Parc d'expositions, Le Bourget, Paris, France.
  - On Sabbatical in Granada, España writing book on Amazon Borderlands.
  - Salisbury, D. S. 2016. "Conservación y Conflicto en las Fronteras Amazónicas." May 6th Invited Presentation at Sala de Juntas Jacobo Cárdenas, Facultad de Ciencias, Universidad de Córdoba. Córdoba, Spain.
  - Salisbury, D. S. 2016. "Conservación y Conflicto en las Fronteras Amazónicas." May 5th Invited presentation for Ciclo de Conferencias de Biodiversidad y Conservación within Biodiversity and Conservation Masters Program, Salón de Grados, Universidad de Granada. Granada, Spain.

Dr. Roger Sayre

- 2014 – Launch of new, data-derived standardized global 250 m ecological land units (ELUs) data ([http://www.aag.org/cs/global\\_ecosystems](http://www.aag.org/cs/global_ecosystems)); Americas-wide terrestrial ecosystems clips derivable from the global product
- 2016 – (later in year) – will launch new global ecological marine units (EMUs); Americas-wide marine ecosystems will be clipped and contributed to MBON's (GEO Marine Biodiversity Observation Network) Pole-to-Pole Ecosystem Monitoring Initiative, representing a US Government contribution to the AmeriGEOSS Initiative.

### **Education Committee (Principal Betty Smith)**

Dr. Osvaldo Muniz-Solari

- On editorial board of
  - Revista Geográfica
  - Revista Cartográfica
  - Geotrópico
- Principal Professor of CEPEIGE Online

- REDONLINE-PAIGH2015. PAIGH approved project to develop a network of geography teachers in Latin America to study global climate change.
- Member of International Geographical Union's Commission on Geographical Education (Coordinator for Latin America) <http://www.igu-cge.org/>

Dr. Betty Smith

- Conference presentation: Smith, Betty Elaine. 2015. *Geodemographic Trends in the Heartland*, Midwest Association for Latin American Studies (MALAS), Millersville, PA, October 2015.
- New course development for online delivery: Eastern Illinois University GEO 3070 Geography and Culture of Mexico, Caribbean and Central America was approved for online delivery in 2015. This course is fully enrolled to be taught for the first time online fall semester 2016 by Dr. Betty Elaine Smith.

Dr. Diana Sinton

- Developing the new PAIGH USNS website.
- Has been focused on Geospatial Technologies and Learning.

### **Institutional Strengthening Committee (Principal Vacant)**

Dr. Patricia Solís

- Solís, Patricia, Marie Price, and Maria Adames. (Accepted, in press). Building Collaborative Research Opportunities into Study Abroad Programs: A Case Study from Panama. Manuscript accepted by Journal of Geography in Higher Education.

### **Geophysics Commission**

#### **Applied Geophysics Committee (Principal – Dr. Bettina Martinez Hackert)**

Dr. Bettina Martinez Hackert & Dr. Jorge Bajo

- Jorge V. Bajo Sanchez, Bettina Martinez-Hackert, Gabriel Legorreta Paulin, and Francisco S. Montalvo Piche. (Accepted, in press) Landslide inventory mapping for calculating potential lahar volume for Canton Buenos Aires on LLamatepec (Santa Ana) Volcano, Santa Ana, El Salvador. Abstract accepted by Revista Geográfica.

#### **Special Studies Committee (Principal – Dr. Manuel Araneda (Chile))**

Dr. Jorge Bajo & Dr. Bettina Martinez Hackert

- J.V. Bajo Sanchez, Bettina Martinez-Hackert, Chris S. Renschler, Cecilia Polo Lopez, and Eduardo Gutierrez Flores. (Accepted, in press). Community Volcanic Hazard Map (CVHM) for Vulnerability Analysis. Abstract accepted by Journal Applied Geography.

### **Conferences and meetings**

- Martínez-Hackert, B., Bajo Sanchez, J.V., Figueroa, C., Active Volcanoes Under Water and Inland: Using Hydrography On Coatepeque Caldera Lake, El Salvador, The

Hydrographic Society of America (THSOA) and US Hydro 2017 conference, Galveston , TX, March 2017 accepted as 20-minute presentation during one of the US Hydro 2017 Technical Program sessions- this presentation requires prior submission of technical paper and presentation by March 1st.

- Bajo Sanchez, J.V. and B. Martínez-Hackert, 2016, Integrating Community Knowledge to Hazard Mapping, Cities on Volcanoes 9, Puerto Varas, Chile, November 20-25.

Dr. Chris Castro

- Evaluating changes in extreme events during the North American monsoon using convective-permitting regional atmospheric modeling. Second Workshop on Climate Change, Variability, and Modeling over Central America and Mexico. University of Costa Rica, San José, Costa Rica. November 14-18, 2016.
- Emerging capabilities in convective-permitting atmospheric models in climate research. Sixth National Climate Change Research Conference. University of Sonora, Hermosillo, Sonora, Mexico. 17-18 October 2016.
- The use of atmospheric models to improve weather forecast prediction in the North American monsoon region]. Annual Mexican Geophysics Meeting. Puerto Vallarta, Mexico, November 2-7, 2015
- The use of regional models to improve weather forecasts and climate projections in Mexico and the Central America. Invited seminar, Atmospheric Science Department, Autonomous National University of Mexico. March 20, 2015

#### Papers and publications

- Bajo, J.V., Martinez-Hackert, B., Renschler, C.S., Polio, C., Gutierrez, E., 2016, Community Volcanic Hazard Map (CVHM) for Vulnerability Analysis, Applied Geography, Accepted and in revision.
- Bajo, J.V., Martinez-Hackert, B., Paulin, G.L., and Montalvo, F.S., 2016, Landslide inventory mapping for calculating potential lahar volume for Canton Buenos Aires on Ilamatepec (Santa Ana) Volcano, Santa Ana, El Salvador, Revista Geografica IPGH.
- Armenteras, D., C. Gibbes, C.A. Vivacqua, J.S. Espinosa, W. Duleba, F. Gonçalves, and C. Castro, 2016. Interactions between Climate, Land Use, and Vegetation Fire Occurrences in El Salvador. Atmosphere, 7(2), 26; doi:10.3390/atmos70026.
- Legorreta, G., Bursik, M.I., Zamorano, J.J., Lugo, J., Martínez Hackert, B. and Bajo, J.V., 2016, Estimación de volumen por formas del relieve de materiales de deslizamientos en la cuenca El Estado, Volcán Pico de Orizaba, Puebla-Veracruz, Investigaciones Geográficas. DOI: <http://dx.doi.org/10.14350/rig.51113>

#### Books

- Centeno, R., D.K. Adams, J. Amador Astúa, C.L. Castro, T. Cavazos, R. López, C. Lizárraga Celaya, V. Castro, and E. López, 2016. Fenómenos Clímaticos y Su Relevancia Para El Cambio Climático Regional Futuro, Capítulo 12 de Reporte Mexicano de Cambio Climático: Bases Científicas, Modelos, y Modelación, [English Tranlation: Climate phenonmena y their relevance for future regional climate change, Chapter 12 of Mexican Climate Change Report: Scientific bases, models, and modeling] B. López, editor. National Autonomous University of Mexico, Program in Climate Change Research. Mexico City, D.F., Mexico.

## **History Commission**

Dr. Jim Siekmeier

- Department of History at University of West Virginia, is the proud author of a new book, *Latin American Nationalism: Identity in a Globalizing World*, out in September, 2017.

Dr. Erick D. Langer,

- School of Foreign Service, Georgetown University, was inducted into the Academia Boliviana de Historia as an Honorary Member in La Paz, Bolivia in November of last year.
- Member of the Conseil Scientifique of the Institut des Amériques, the body that oversees studies of the Western Hemisphere in French universities.
- Dr. Langer wrote two essays, “Indigenous Independence in Spanish South America,” and “Consolidating Divergence: The Americas and the World After 1850,” the latter co-authored with John Tutino, were published in the book edited by John Tutino titled *New Countries: Capitalism, Revolutions, and Nations in the Americas, 1750-1870* (Duke University Press, 2016).

Dr. Juana Moriel-Payne

- Published a new novel, *La caza del venado*, finalist in the IV Concurso Internacional of Contacto Latino contest. The novel was published in Spanish last year (2016).